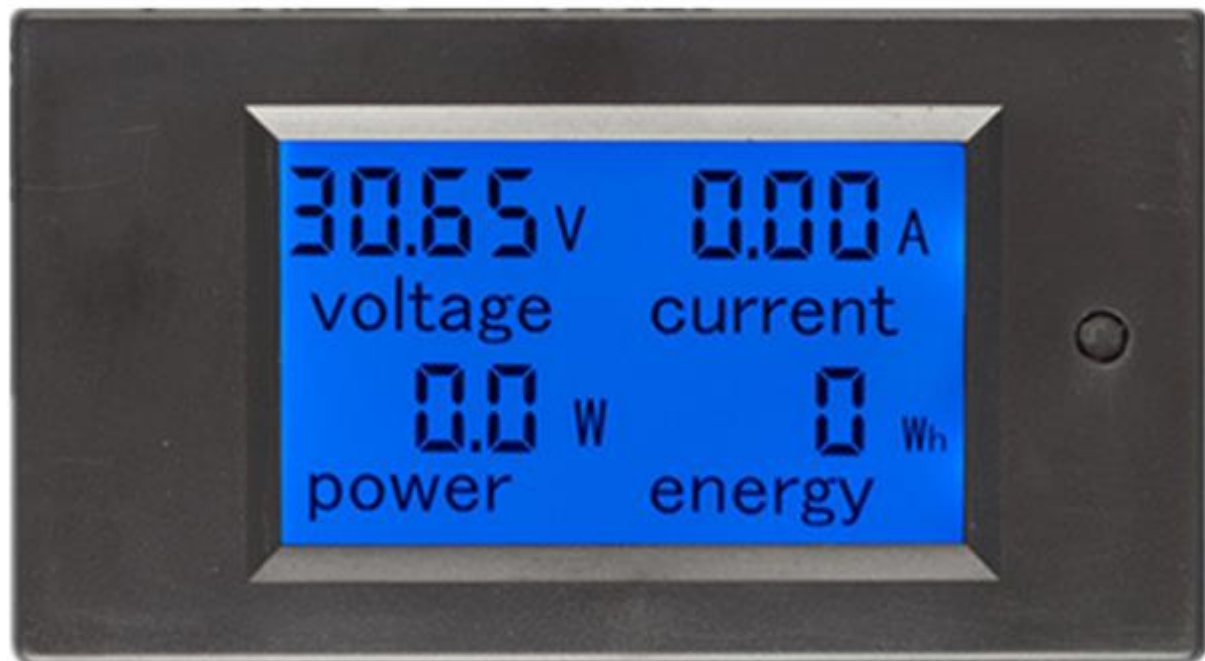


Product Description



1. Electrical parameter measurement function (voltage, current, active power, energy)

2. Voltage alarm function (over voltage alarm threshold, backlight and voltage flashing to alarm).
3. The reset function of energy key.
4. Store data when power off.
5. Large-screen LCD (display voltage, current, active power, energy at the same time)
6. Backlight function.

Key

1. **Backlight control** Short press the key to turn on or off the backlight, the backlight has memory function, it can store the on or off state when power off.

2. **Reset energy** **Step1:** Long press the key until the power display area display “CLr”, then release the key. **Step2:** At this moment, the energy is flashing to prompt this is the energy reset state, if short press the key again, then the energy value is cleared and exit the reset flashing state. **Step 3:** If there is no operation within 5 seconds, it means the energy value is not cleared and will exit the reset state.

3. **Set voltage alarm threshold** **Step1:** Long press the key until the power display area display “SET”, then release the key. **Step2:** After enter this state, the voltage area display the current high voltage alarm value, the current area display the current low voltage alarm value and the last digit begin to flash, then you can short press to plus 1, when there is no operation over 3 seconds, it will switch the digit position automatically, from the high voltage alarm value to the low voltage alarm value, there are total six digits, the range of the voltage alarm threshold is 6.5~99.9V; **Step3:** After finish the setting, long press the key until the screen display “PASS” ,that means you set successfully and will exit the setting state automatically.

Peacefair PZEM-031

DC digital multi-function meter Display interface is large-screen LCD, it can display voltage, current, power, energy parameters at the same time.

**Our company's products
(Patent No. : ZL201530340281.0)
Any company or individual manufacturer counterfeiting products
We will investigate the relevant responsibilities according to law and
bear the resulting market losses**



peacefair

PZEM-031

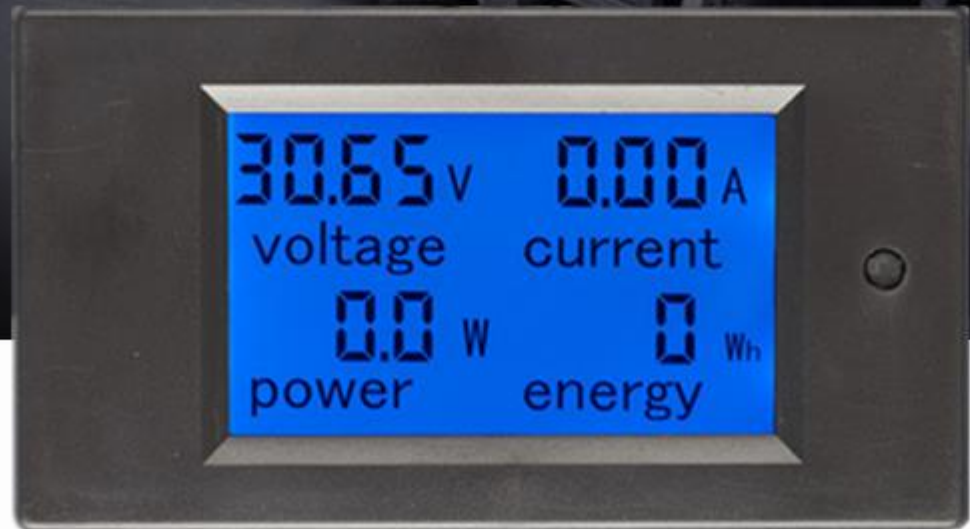
DC Digital Panel Meter

Voltage

Current

Power

Energy



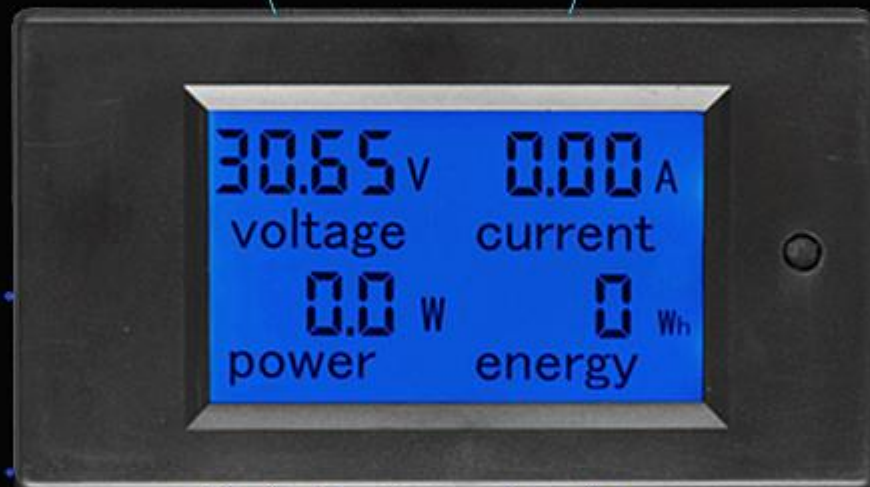
PZEM-031

Voltage

test range: 6.5~100V
Display format: 6.50~99.99V

Current

test range: 0~20A
Display format: 0.00~20.00A



Power

test range: 0~2kW
Within 1KW,
the display format is 0.0~999.9W

1KW and above,
the display format is 1000~2000W

Energy

test range: 0~2kW
Within 1KW,
the display format is 0.0~999.9Wh

1KW and above,
the display format is 1000~2000Wh

MULTIPLE PRODUCT FUNCTIONS



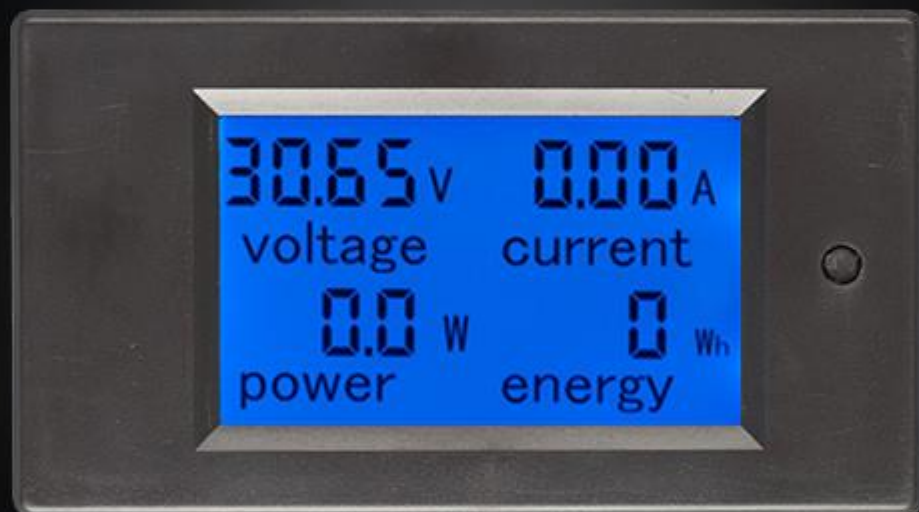
**Electrical parameter
measurement function**



Voltage alarm function



Large-screen LCD



**The reset function
of energy key**



**Store data when
power off**



Backlight function



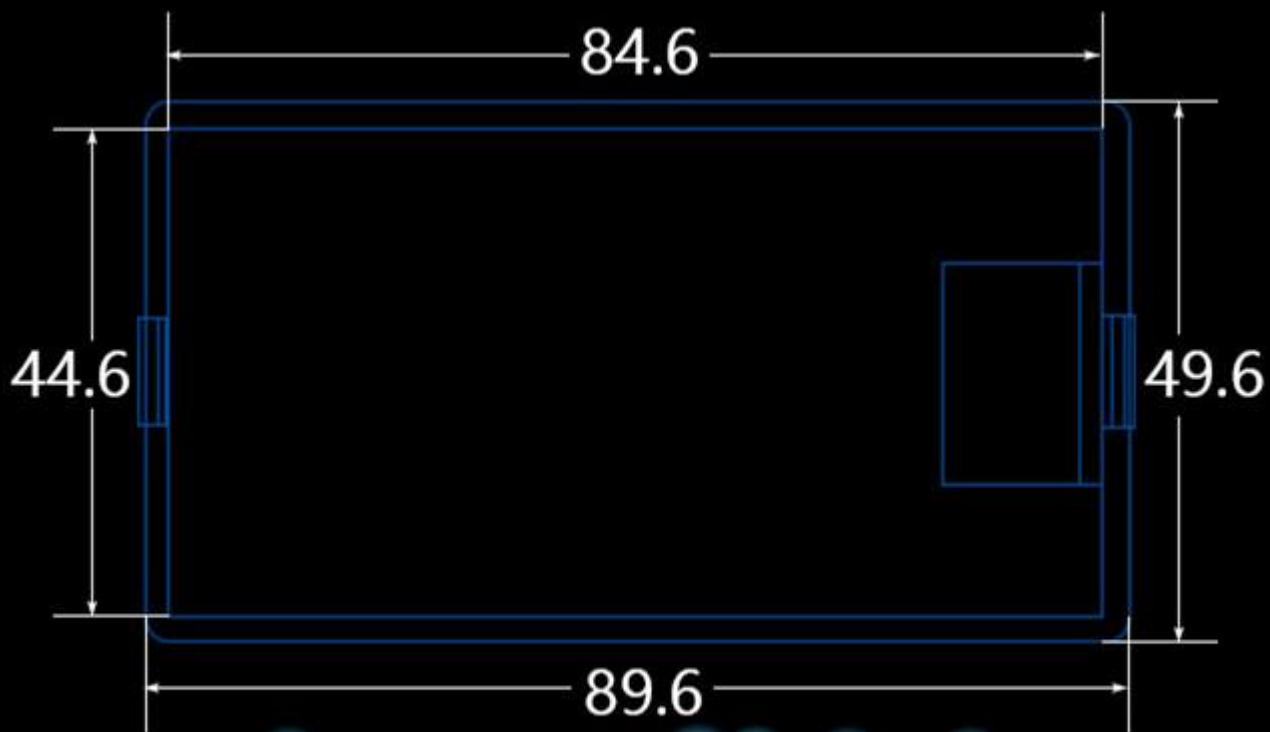
PZEM-031 Wiring Diagram



Size information



The screen size (mm)



Appearance of size(mm)



highly size



open hole size